



EUROPEAN CUP

FINALS 2024

Hafjell & Kvitfjell

15 – 22 March

VOLUNTEERS

WELCOME TO HAFJELL

Hafjell-Kvitfjell Alpin AS, together with The Norwegian Ski Federation looks forward to welcome you all to Norway and the Lillehammer region for the finals this winter.

Our goal is to deliver 8 highly competitive races. To give all skiers a fair chance with good conditions.

We have long experience organizing World Cup and European Cup, and we have established our self as a reliable organizer for FIS, with very few cancelations over the past 30 years. Our staff is experienced, and we always work hard to delivering good race conditions for everyone.

Volunteer information:

We are looking forward to meeting all the volunteers in Hafjell in the rigging period and during race days. We hope some of you also volunteered during WC and we hope everyone gets to experience meaningful work in a safe environment. Section leaders will inform and help you to understand and execute the task you are given, if you are uncomfortable with the task you have selected, we will try to find another task for you.

We hope all the volunteers will have a great time helping out at the European Cup Final in Hafjell, once again welcome and let's hope for perfect conditions, great races and sunshine☺

www.europeancup.no

We will keep our webpage updated and you can also find all information including maps there.

Transport

- Volunteer parking at the bottom of Hafjell skiresort
- Use public transport to get to Hafjell
- If you can't get to Hafjell on time, send sms to your sectionleader that you are late (Mobil number on the last page).

TRANSFERS



Practical information

HAFJELL

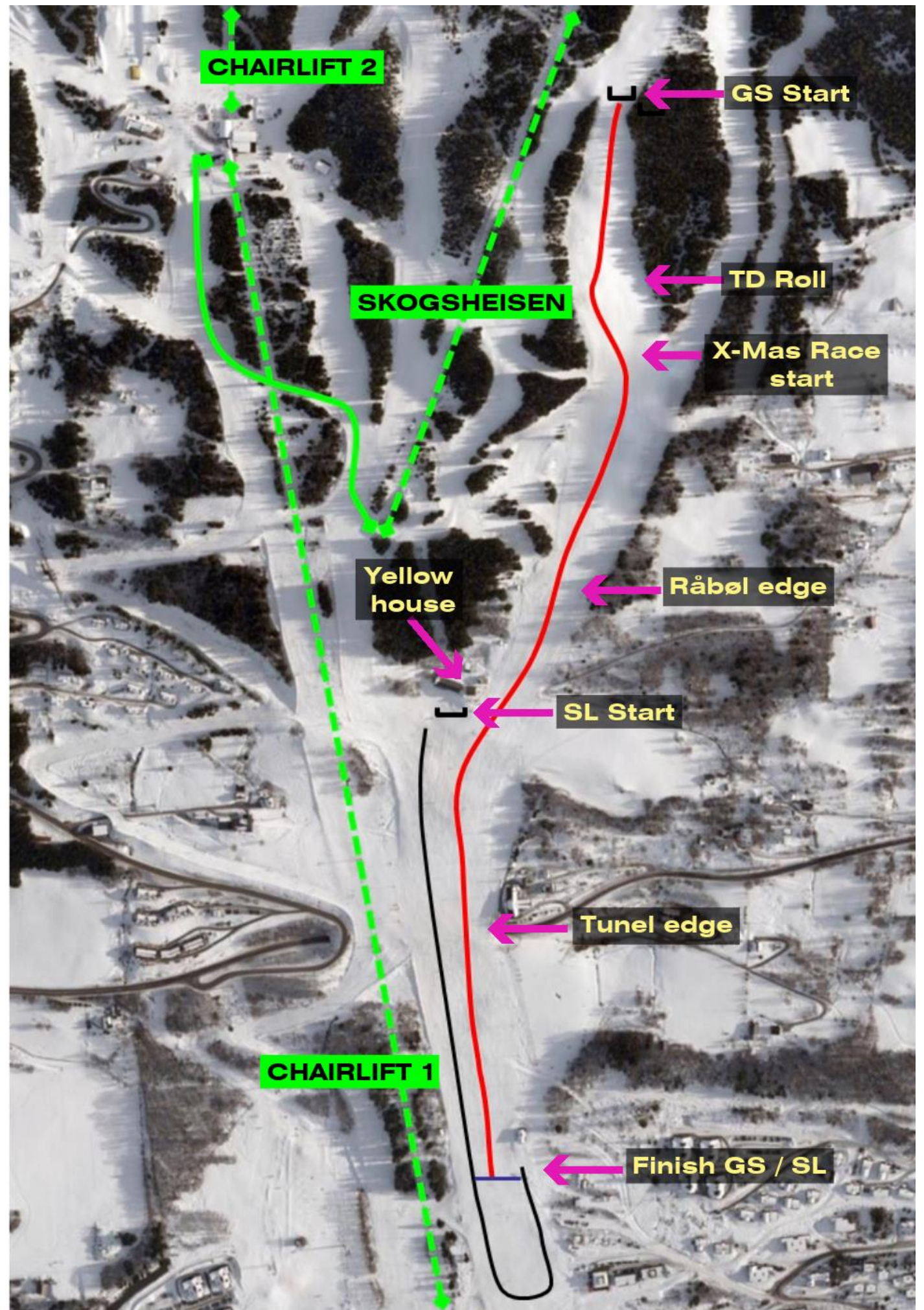
- Bus stop and parking is situated at the bottom of Hafjell skiresort.
- Volunteer meeting point will be in the seating area beside of restaurant Pizza Torget, Hafjell.
- Race office will be located by the finish area in the Arena building (house above Lodgen restaurant).
- Every evening you will receive an SMS with information and when to meet the next day.
- Those who are working in the course and don't have a season pass, will get a day pass for the lift.
- Lunch on race days, and on long days when we are preparing for the race. This will be served in the volunteer meeting point.
- We use Rubic Connect, download to get more information on your task and you can confirm your task in the system.



HAFJELL

Race course

- Racecourses will be at the south side of Hafjell ski resort. To access, use the Chairlift 1 and Skogsheisen to the Olympic slope.
- Keep in mind that the finish area are based approximately 150m up from the bottom, and is not at the bottom of the resort.
- Same start for both men and women.
- Volunteer program:
 - 9th to 15th of March Rigging period
 - 16th of March Slalom men and women
 - 17th of March Giant slalom women
 - 18th of March Giant slalom men



Contact's European Cup, Hafjell

Venue manager, Jan-Erik Fossheim +4792426488

Chief of race, Østen Tande +4741239355

Chief of course (Bakkemannskap), Dag Erik +4793450959

Chief of slip crew (Løypemannskap) Martin +4790147392

Chief of Race crew (Løypemannskap) Hans +4790119242

Chief of finish arena (Arenamannskap) Rolf +4797057301

Chief of Event office, Marie Hoff +4798672579

Chief of Gate judges (Portvakter) Cecilie Aubert +4790845626

www.europeancup.no