

Invitation to



Hafjell & Kvitfjell

15 – 22 March

Welcome to Hafjell and Kvitfjell

Hafjell-Kvitfjell Alpin AS, together with The Norwegian Ski Federation look forward to welcome you all to Norway and the Lillehammer region for the European Cup finals this winter.

Our goal is to deliver 8 highly competitive races; to give all skiers a fair chance with good conditions.

We have long experience organizing World Cup and European Cup, and we have established our self as a reliable organizer for FIS, with very few cancelations over the past 30 years. Our staff is experienced, and we always work hard to deliver good races.

Good luck with the season, and we are looking forward to see everyone in March.

We will keep our webpage updated and you can also fin all information including maps there.

www.europeancup.no

Accommodation

It is possible to arrive early to both Hafjell and Kvitfjell. Please contact accommodation@worldcupkvitfjell.no for further information and booking.

Payment: All payment needs to be settled before departure from each location directly to the LOC. Information regarding where and when will be given at the TCM.

Hafjell:

All teams and SRS will be staying at Scandic Hafjell or Neramo Hotel. Both hotels are located within a 5 minutes drive from Hafjell Skiresort.

Scandic Hafjell: Hundervegen 1, 2636 Øyer
Neramo Hotell: Nermovegen 56, 2636 Øyer

Kvitfjell:

All teams and SRS will be staying at the middle station, in Kvitfjell Hotel or Gudbrandsgard Hotel. Both hotels are close to the slope and no addition transport is needed to reach the race course.

Kvitfjell Hotel: Kvitfjellvegen 492, 2634 Faavang
Gudbrandsgard Hotell: Kvitfjellvegen 477, 2634 Faavang

Training

It is possible to book training in both Hafjell and Kvitfjell outside of official training/competition days.

Before official arrival day in Hafjell: trening@hafjell.no
Before official arrival day in Kvitfjell: trening@kvitfjell.no

During official training/competition days in both Hafjell and Kvitfjell: please contact andreas.kollenborg@skiforbundet.no or armin.trendl@skiforbundet.no

Accreditation and ski pass

It will be no accreditation for this event.

Ski passes in Hafjell: We will provide ski pass for Thursday, to Monday for the mens teams, and Thursday to Sunday for the women's teams.

Ski passes will be handed out upon arrival to the hotel. If arrival before Thursday or Friday it will be handed out at the hotel on Friday between 08:00 to 09:30

It is no need for ski pass in Kvitfjell.

Contact information

Accommodation:

accommodation@worldcupkvitfjell.no

Race office: eventoffice@worldcupkvitfjell.no

or

marie@worldcupkvitfjell.no

President LOC:

olekristian@worldcupkvitfjell.no

HAFJELL:

Point of contact: janerik@worldcupkvitfjell.no

Ski rooms: janerik@worldcupkvitfjell.no

Hafjell Ski resort:

Hundervegen 122, 2636 Øyer

Race office and TCM:

Sørliå 40, 2636 Øyer

KVITFJELL:

Point of contact:

Ski rooms: svmundal@online.no

Kvitfjell Ski Resort:

Finish area: Mæhlumsvegen 15, 2634 Faavang

Middle station: Kvitfjellvegen 471, 2634 Faavang

Program

HAFJELL

Friday 15.03:
Official arrival day and first TCM

Saturday 16.03:
Slalom women and men

Sunday 17.03:
Giant Slalom women
Official departure day women

Monday 18.03:
Giant Slalom men
Official departure day men

All ceremonies directly
after race in finish area

KVITFJELL

Monday 18.03:
Official arrival day and first TCM

Tuesday 19.03:
Downhill training 1 women and men

Wednesday 20.03:
Downhill training 2 women and men

Thursday 21.03:
Downhill women and men

Friday 22.03:
Super G women and men
Official departure day women and men

All ceremonies at
Gudrandsgard Hotell

Transport

From Trysil to Hafjell: 164km / 2 hours

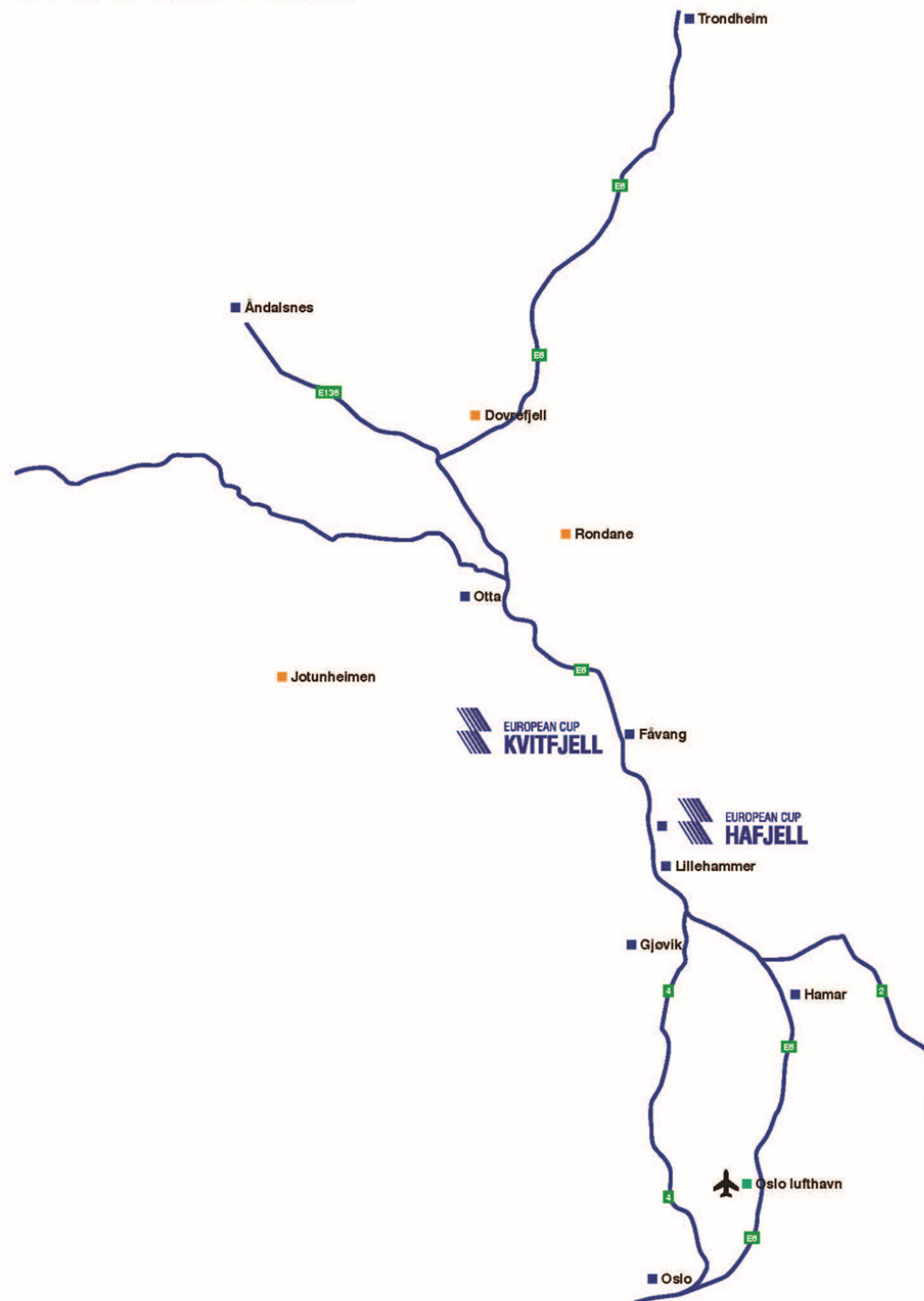
From Norefjell to Hafjell: 208km / 3 hours

From Hafjell to Kvitfjell: 44km / 42 minutes

From OSL Airport to Hafjell: 159km / 1 hour 30 minutes

From OSL Airport to Kvitfjell: 203km / 1 hours 45 minutes

TRANSFERS





Practical information HAFJELL

Parking will be at the bottom, and spaces for teams will be reserved and marked.

A room to store bags, clothes and shoes for racers will be provided in the bottom close to the chair lift and parking.

Race office will be located in the finish area in the Arena building.

Teams Captains meeting will be held in the same building as the Race Office (Arena building).

Ski service area at hotels or close to the hotels.

Meals at hotel, except lunch on race days in Hafjell, use voucher in resort restaurant's close to finish area. Vouchers will be handed out after first TCM Friday.

Ski rooms HAFJELL



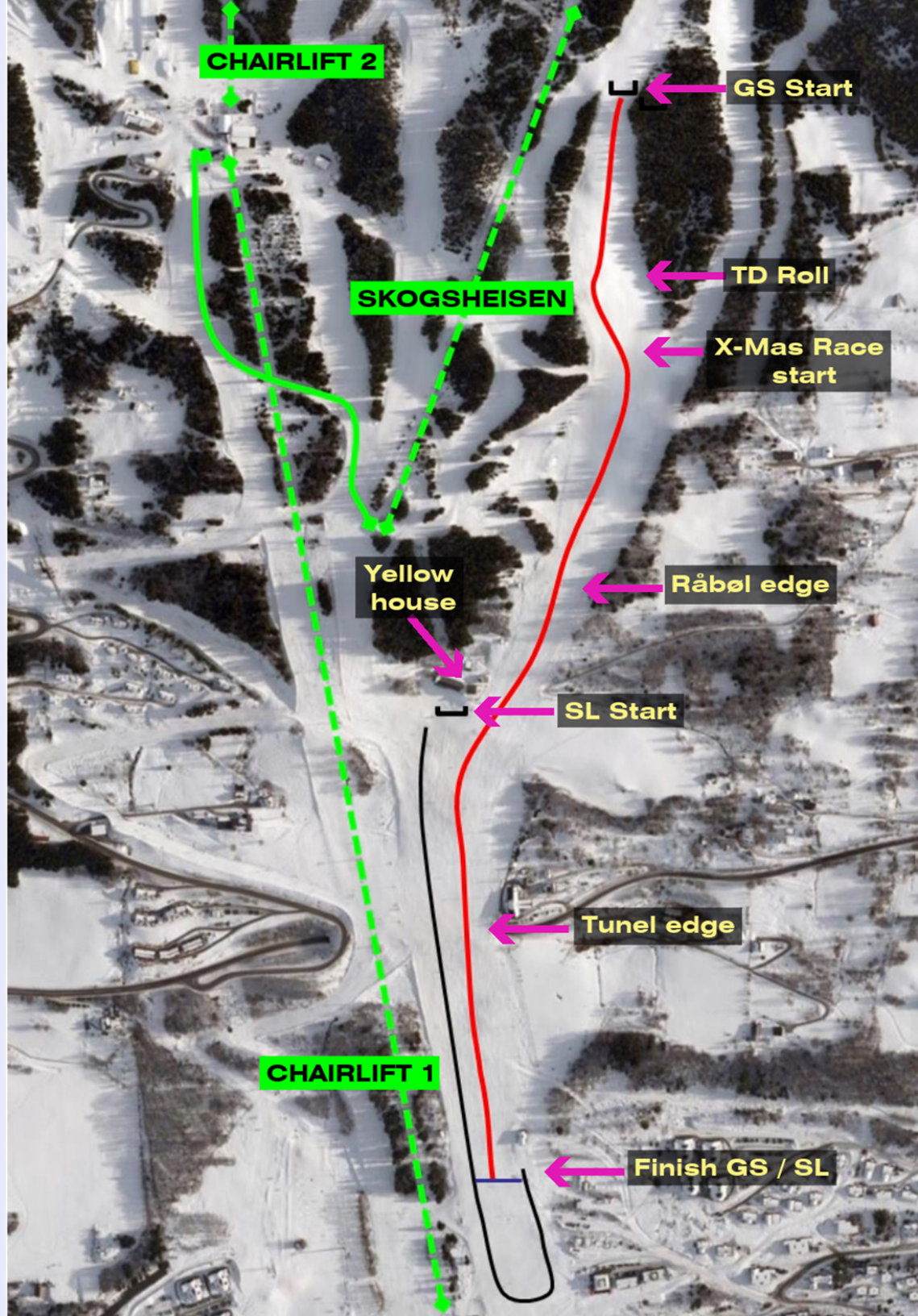
HAFJELL Race course

Racecourses will be at the south side of Hafjell ski resort.

To access, use the Chairlift 1 and Skogsheisen

Keep in mind that the finish area are based approximately 150m up from the bottom, and is not at the bottom of the resort.

Same start for both men and women.



Practical Information KVITFJELL

Parking spaces at Kvitfjell Hotel and Gudbrandsgard Hotel and in connection to ski rooms. All parking is free. No spaces reserved.

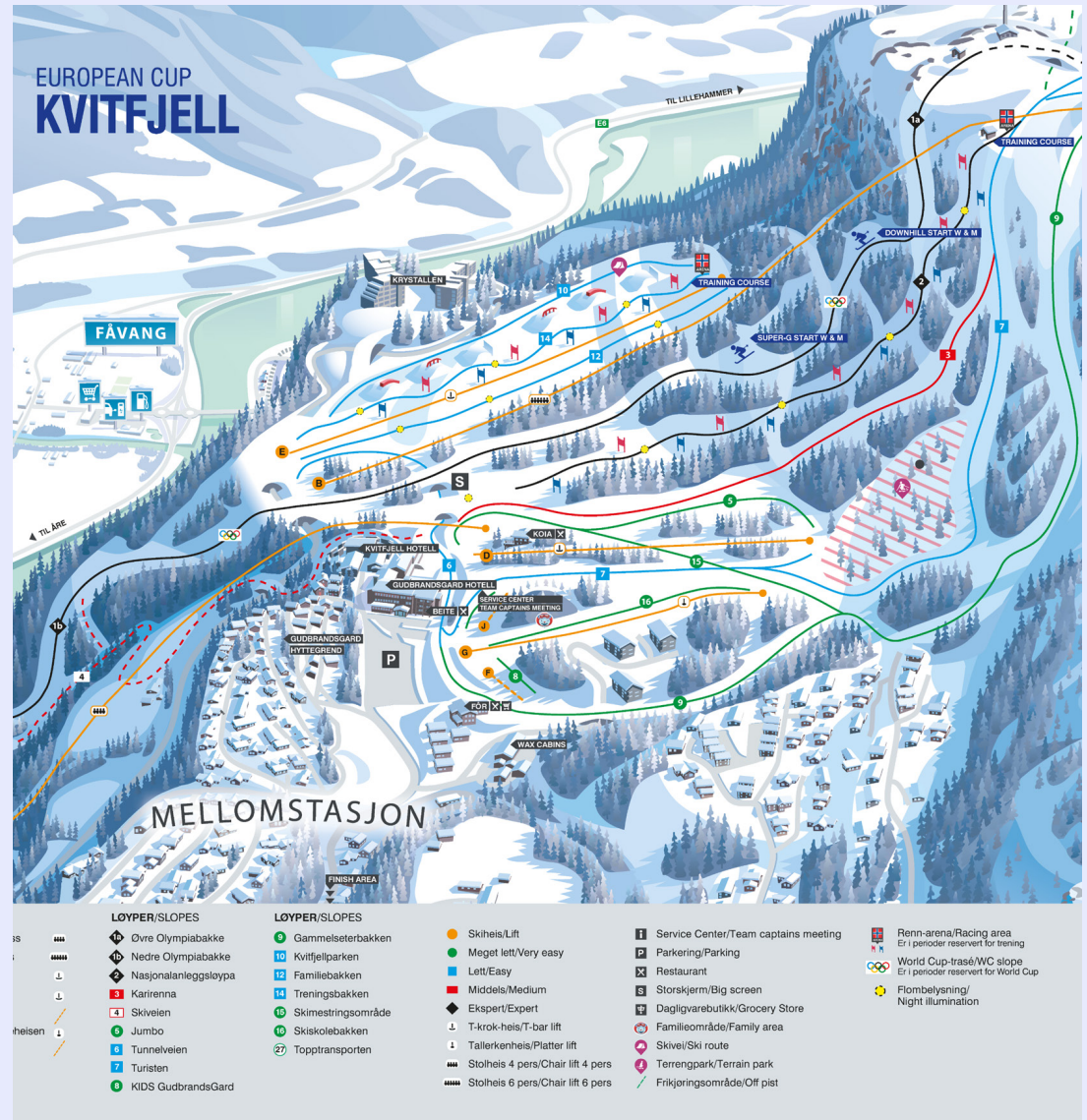
All teams including SRS will be lodged at the middle station. Ski in / ski out.

Race office will be located at Gudbrandsgard Hotel.

Teams Captains meeting will be held at Gudbrandsgard Hotel, Kvitfjellsalen

Ski service area at the middle station. We will use the same as during World Cup.

All meals at hotels, including lunch.



KVITFJELL

Race course

The race course in Kvitfjell are based on the east side of the mountain.

To access start DH use chairlift from the middle station to the top. To access SG start you can use the family t-bar lift and walk a few meters up to start.

To get to the middle station, use chairlift from finish area.

Same start for men and women

